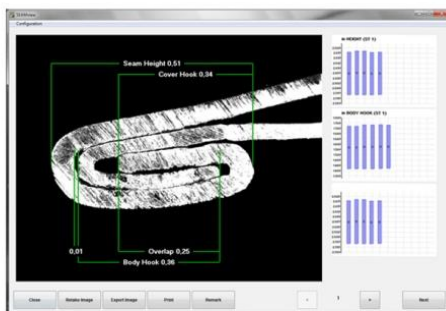


CMC-KUHNKE to exhibit new Tailored Craft Beer Seam Inspection Package at CBC 2016

CMC-KUHNKE has worked with the craft market since the beginning of the can revolution. Based on feedback from our 100+ craft beverage customers we continue to tailor our seam package to meet the needs of the industry.

We invite canning breweries to bring sample cans from their brewery to our booth #1212 at BrewExpo America for a free PDF seam report - they will get to see on screen their cross sectioned cans and the accompanying measurements.



The SEAMscan Craft Package Seam Measurement with Database Reporting

The SEAMscan Package is an affordable high-resolution tool for double seam inspection and measurement designed specifically for craft breweries.



Save time and improve the efficiency of your Double Seam Inspections

- Connect your Countersink Depth & Seam Thickness gauges to easily input data
- Automatically compare results to specification limits (Out of spec results shown in red on-screen)
- Track measurements by seamer head
- On-Site Installation and Training of new software by CMC-KUHNKE Technician
- 1-Year Technical Support - Including Calibration Services and Software Updates

CMC-KUHNKE Worldwide

CMC-KUHNKE GmbH
Colditzstr. 34, Bau 18
D-12099 Berlin
GERMANY

Tel: +49-30-230066-0
Fax: +49-30-230066-66
www.CMC-KUHNKE.de

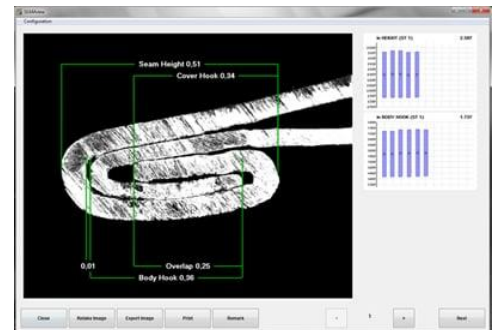
CMC-KUHNKE, Inc.
1060 Broadway
Albany, NY 12204
UNITED STATES

Tel: 518-694-3310
Fax: 518-694-3311
www.CMC-KUHNKE.com

The SEAMscan Craft Package is made up of three products essential for proper double seam maintenance and includes a 1-Year Technical Support Plan:

SEAMview Inspection Software

- Capture, measure & save seam images in less than 1 second!
- Customize inspection screens, zoom levels & alert colors
- Save image as a .BMP, .PNG, .GIF or .JPG file, send it in an e-mail message, or even use it in a document or a spreadsheet.



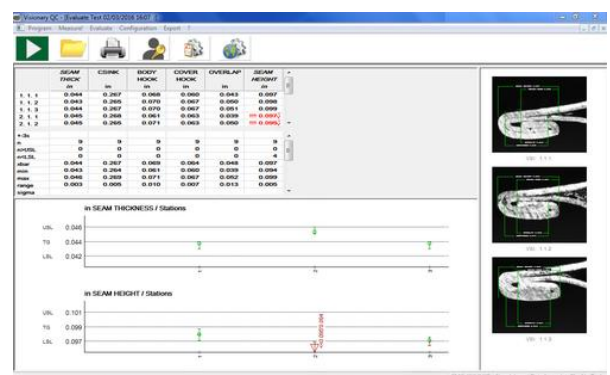
Video Seam Imager

- Patented auto-focussing can holder
- Clearly illuminates & captures images of seams
- High-resolution USB camera & precision optics
- Rugged and reliable



Visionary Craft Software

- Connect hand gauges for easy data entry
- Compare results to specification limits
- Multiple Operators
- Customized Test Types
- Recheck Capability
- Monitoring Limits



CMC-KUHNKE Worldwide

CMC-KUHNKE GmbH
Colditzstr. 34, Bau 18
D-12099 Berlin
GERMANY

Tel: +49-30-230066-0
Fax: +49-30-230066-66
www.CMC-KUHNKE.de

CMC-KUHNKE, Inc.
1060 Broadway
Albany, NY 12204
UNITED STATES

Tel: 518-694-3310
Fax: 518-694-3311
www.CMC-KUHNKE.com

CMC-KUHNKE launches a new website for the Craft Brew Industry

www.craftseams.com

Dedicated to the craft brewing industry, www.craftseams.com provides breweries with clear and pertinent information on CMC-KUHNKE's line of Can Double Seam Inspection equipment.

With the craft brewing industry growing fast and with more and more breweries installing canning lines, there was an apparent need to create a place where CMC-KUHNKE could easily show the benefits of their quality control equipment to brewers who are canning their beers.

Many startup breweries rely on word of mouth from their peers when it comes to their business decisions. The testimonial page at www.craftseams.com shows videos and quotes from companies like Oskar Blues, New Belgium, Cigar City Brewing, Epic Brewing and Wild Goose Canning and a list of CMC-KUHNKE's 100+ craft brew customers, as a way to let prospective clients feel confident in CMC-KUHNKE Double Seam Inspection products.

The mobile-friendly site also provides a link to CMC-KUHNKE's partner site, www.DoubleSeam.com, a troubleshooting guide providing the knowledge and skills to recognize a safe, secure and properly formed double seam on a can.

CMC-KUHNKE Worldwide

CMC-KUHNKE GmbH
Colditzstr. 34, Bau 18
D-12099 Berlin
GERMANY

Tel: +49-30-230066-0
Fax: +49-30-230066-66
www.CMC-KUHNKE.de

CMC-KUHNKE, Inc.
1060 Broadway
Albany, NY 12204
UNITED STATES

Tel: 518-694-3310
Fax: 518-694-3311
www.CMC-KUHNKE.com